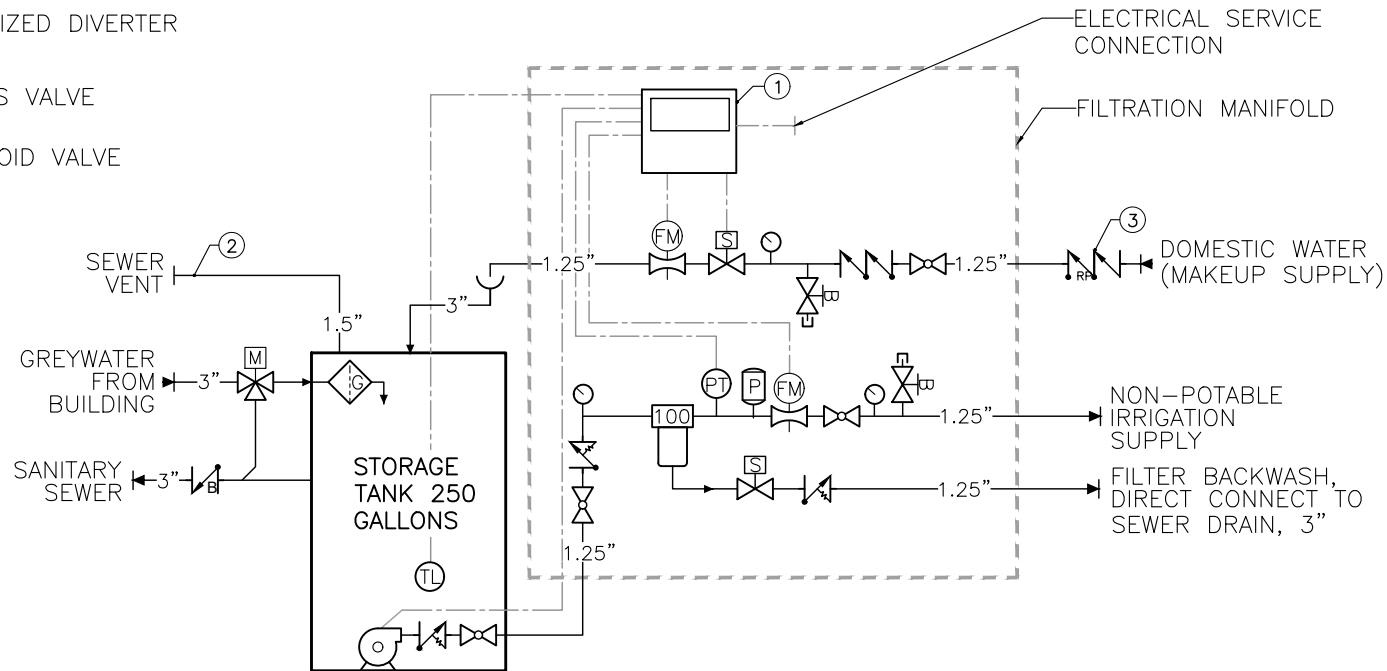
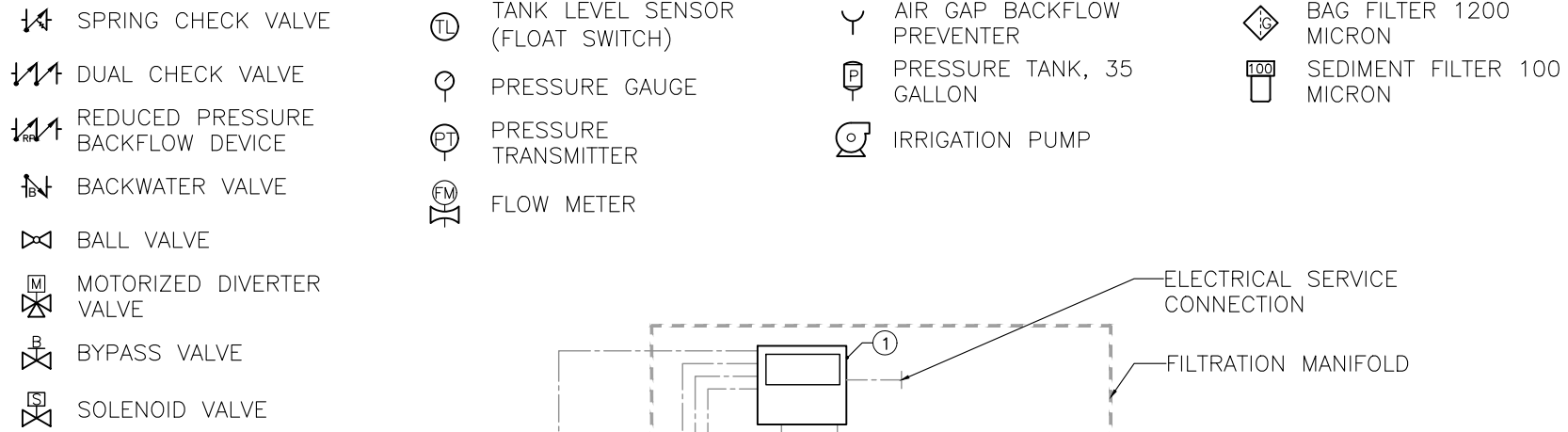


LEGEND



SPECIFICATIONS

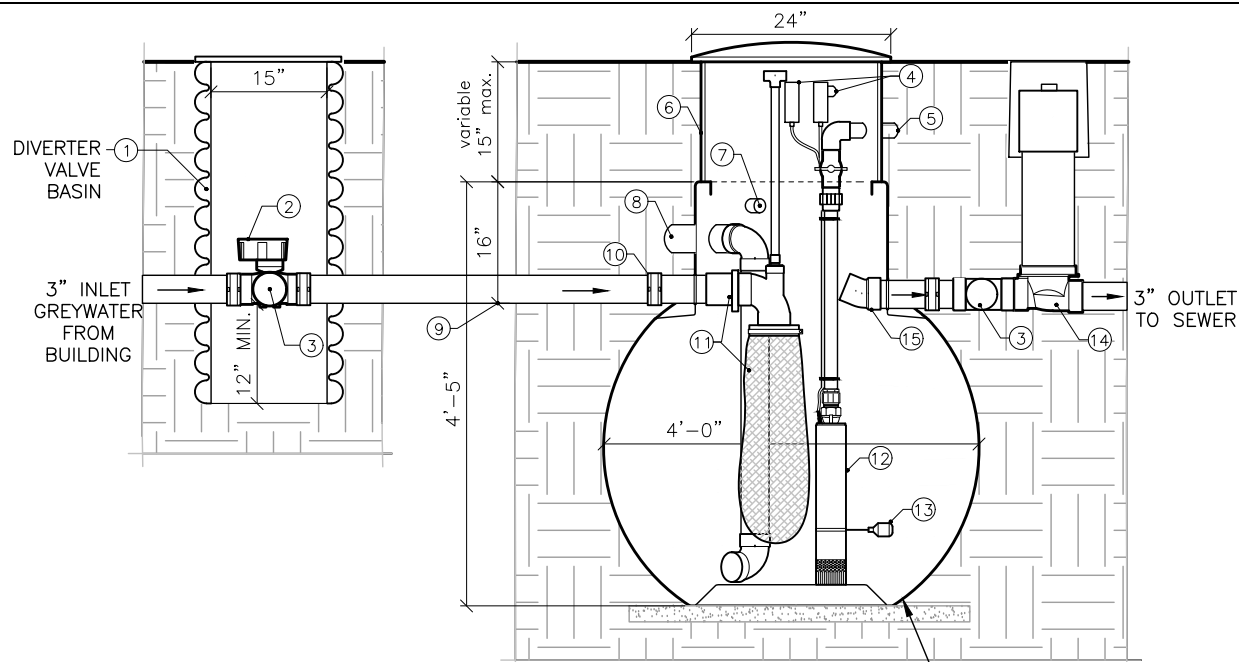
GREYWATER SYSTEM	GW-250U-15
SIZING CAPACITY	250 GPD (8 PERSON HOUSEHOLD)
FINAL FILTRATION	100 MICRON
DESIGN PRESSURE & FLOW	15 GPM @ 45 PSI
GREYWATER SUPPLY	SUB-SURFACE IRRIGATION (DRIP OR BUBBLERS)
ELECTRICAL SERVICE	120VAC 20A CIRCUIT

NOTES

- ① GREYWATER SYSTEM CONTROL PANEL
- ② CONNECT TANK VENT TO SANITARY BUILDING VENT
- ③ INSTALL REDUCED PRESSURE BACKFLOW DEVICE ON DOMESTIC WATER SUPPLY AT METER, BY OTHERS

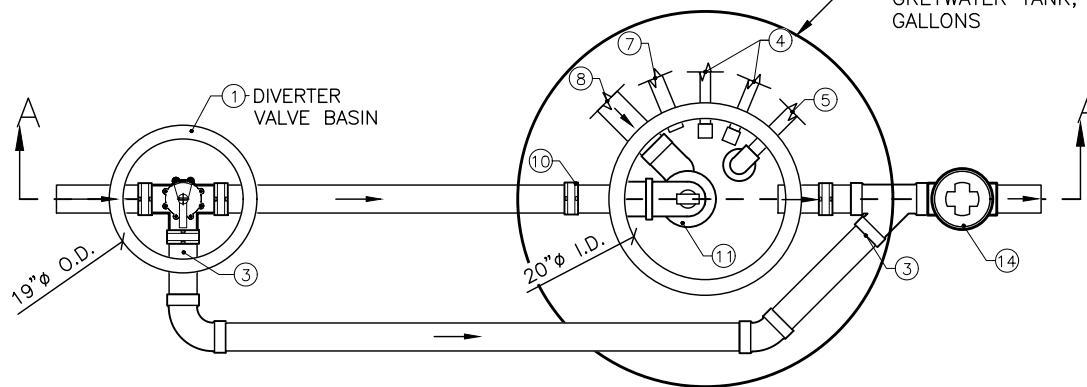
Smart Greywater System
GW-250U-15

DRAWING NAME: SYSTEM DIAGRAM	
DATE: 1/27/2016	DRAWN: JM
SCALE: NO SCALE	SHEET: 1 of 4
UNLESS NOTED DIMENSIONS ARE IN INCHES WITH TOLERANCES ±0.02 IN/IN DO NOT SCALE	
WATERLAB IS THE PRODUCTS DIVISION OF WATERSPROUT INC. THE INFORMATION CONTAINED IN THIS DRAWING IS THE SOLE PROPERTY OF WATERSPROUT INC. ANY REPRODUCTION IN PART OR AS A WHOLE WITHOUT THE WRITTEN PERMISSION OF WATERSPROUT INC IS PROHIBITED. DESIGN AND INVENTIONS RIGHTS ARE RESERVED. IN THE INTEREST OF TECHNOLOGICAL ADVANCEMENT, ALL PRODUCTS ARE SUBJECT TO DESIGN AND/OR MATERIAL CHANGE WITHOUT NOTICE WATERSPROUT INC. 2016	



SECTION A-A

UNDERGROUND
GREYWATER TANK, 250
GALLONS



GREYWATER TANK & DIVERTER VALVE BASIN PLAN

GENERAL NOTES

1. THE CONTRACTOR SHALL FURNISH AND INSTALL THE GREYWATER SYSTEM PACKAGE AS PROVIDED BY WATERSPROUT INC. ALL PIPING & EQUIPMENT BETWEEN DIVERTER VALVE BASIN, STORAGE TANK, FILTRATION MANIFOLD & BUILDING SHALL BE SUPPLIED BY INSTALLING CONTRACTOR. DIVERTER VALVE BASIN SHALL BE SUPPLIED BY INSTALLING CONTRACTOR. SEE SPECIFICATION ON SHEET 4 FOR SPECIFIC EQUIPMENT INCLUDED IN PACKAGE.
2. THE BASIN & TANK SHALL BE INSTALLED UNDERGROUND IN A LOCATION WHERE ALL THE GREYWATER FIXTURES CAN GRAVITY DRAIN TO THE BASIN/TANK AND THE TANK CAN GRAVITY OVERFLOW TO THE SEWER. THE TANK SHALL NOT BE INSTALLED UNDER HARDSCAPE SURFACES (PATIOS, PAVERS, FLAGSTONE, ETC.) WHERE THE LID IS NOT ACCESSIBLE. THE LID MUST REMAIN ACCESSIBLE FOR ANNUAL MAINTENANCE OF BAG FILTER IN TANK. THE TANK SHALL BE INSTALLED A MINIMUM OF 5' AWAY FROM BUILDINGS OR STRUCTURES WHOSE FOUNDATION WEIGHT MAY BEAR UPON THE TANK, AND 5' AWAY FROM PROPERTY LINES PER CA PLUMBING CODE.
3. ALL WORK ASSOCIATED WITH GREYWATER SYSTEM SHALL CONFORM TO ALL COUNTY, STATE AND LOCAL PLUMBING & ELECTRICAL CODES.

TANK NOTES

- | | |
|---|--|
| ① | DIVERTER VALVE BASIN, 15"Ø I.D. CORRUGATED HDPE PIPE WITH LID |
| ② | MOTORIZED DIVERTER VALVE |
| ③ | DIVERTER BYPASS TO SEWER, 3"Ø |
| ④ | LINE & LOW VOLTAGE CONDUIT TO FILTRATION MANIFOLD |
| ⑤ | GREYWATER PUMPED TO FILTRATION MANIFOLD (SHEET 3), 1.25"Ø PVC |
| ⑥ | TANK RISERS, 6" OR 15" HEIGHT, MAX. 15' |
| ⑦ | TANK VENT PLUMBED TO BUILDING SANITARY VENT, 1.5"Ø |
| ⑧ | DOMESTIC MAKEUP WATER FROM AIR GAP (SHEET 3), 3"Ø. DIRECT CALMING BOTTOM INLET AWAY FROM PUMP |
| ⑨ | MAXIMUM DEPTH OF DRAIN PIPE INVERT INTO TANK IS 31". FOR DEEPER INSTALLATIONS CONSULT FACTORY FOR ALTERNATIVE TANK |
| ⑩ | NO-HUB CONNECTORS ON ALL PLUMBING PIPES CONNECTED TO TANK |
| ⑪ | BAG FILTER ASSEMBLY WITH SLIDING DISCONNECT |
| ⑫ | GREYWATER EFFLUENT PUMP |
| ⑬ | LOW LEVEL FLOAT SWITCH |
| ⑭ | BACKWATER VALVE ON TANK OVERFLOW & BYPASS, 3" ABS. VALVE BOX AT GRADE. |
| ⑮ | UPTURNED 22" FITTING ON TANK OVERFLOW |



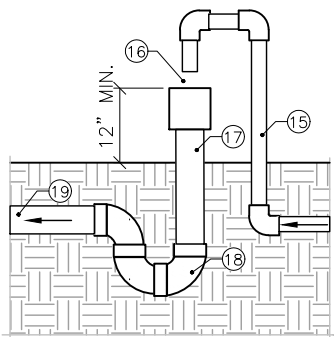
DRAWING NAME:
GREYWATER TANK & DIVERTER
VALVE BASIN

DATE: 1/27/2016	DRAWN: JM
SCALE: NO SCALE	SHEET: 2 of 4

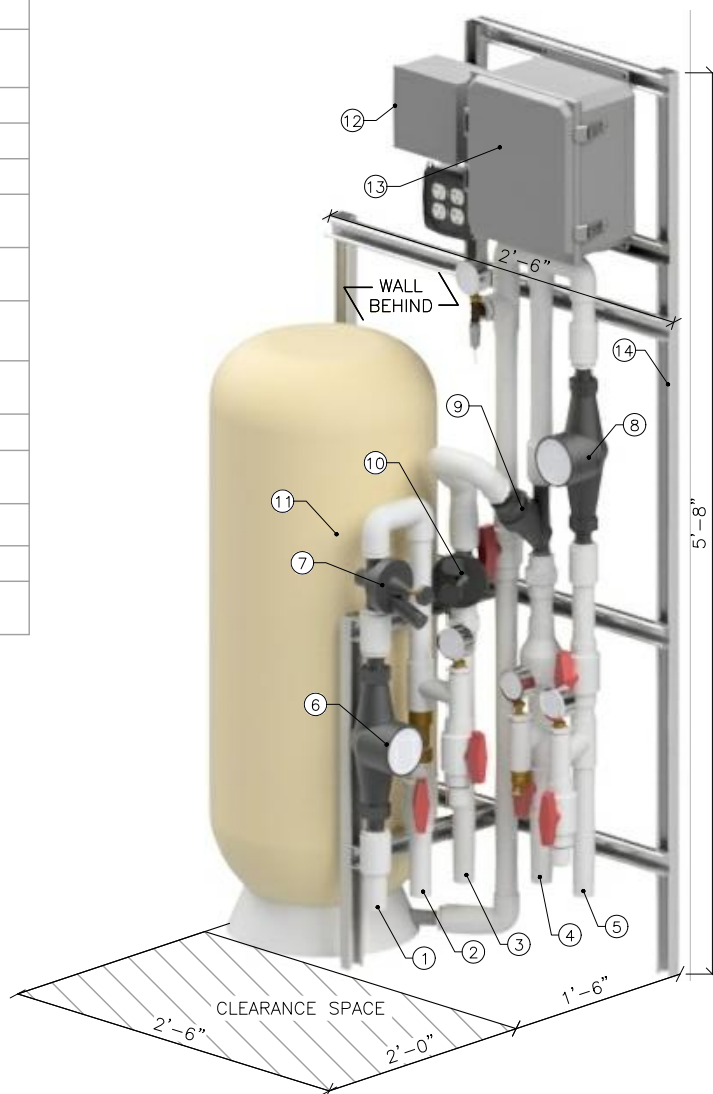
UNLESS NOTED DIMENSIONS ARE IN INCHES
WITH TOLERANCES ±0.02 IN/IN
DO NOT SCALE

WATERLAB IS THE PRODUCTS DIVISION OF WATERSPROUT INC. THE INFORMATION CONTAINED IN THIS DRAWING IS THE SOLE PROPERTY OF WATERSPROUT INC. ANY REPRODUCTION IN PART OR AS A WHOLE WITHOUT THE WRITTEN PERMISSION OF WATERSPROUT INC IS PROHIBITED. DESIGN AND INVENTIONS RIGHTS ARE RESERVED. IN THE INTEREST OF TECHNOLOGICAL ADVANCEMENT, ALL PRODUCTS ARE SUBJECT TO DESIGN AND/OR MATERIAL CHANGE WITHOUT NOTICE WATERSPROUT INC. 2016

SPECIFICATIONS	
DIMENSIONS	2'-6" WIDE x 1'-6" DEEP x 5'-8" TALL
WEIGHT	280 LBS.
FINAL FILTRATION	100 MICRON
PRESSURE RATING	150 PSI
SUPPLY PRESSURE & FLOW	45 PSI MIN. @ 15 GPM MAX.
TREATMENT CAPACITY	1,000+ GPD
GREYWATER SUPPLY	SUB-SURFACE IRRIGATION (DRIP, BUBBLERS, ETC.)
MAKEUP BACKFLOW PREVENTER	AIR-GAP
ELECTRICAL	
ELECTRICAL SERVICE	(1) 20 AMP CIRCUIT 120VAC
PUMP	½ HP, 120VAC 10.6A
CONTROL PANEL	120VAC 1A
TANK FLOAT SWITCH	24VDC 20mA



AIR-GAP BACKFLOW PREVENTER




FILTRATION MANIFOLD

GENERAL NOTES

1. THE FILTRATION MANIFOLD SHALL BE PRE-PLUMBED, WIRED, AND TESTED PRIOR TO SHIPMENT. THE MANIFOLD IS DELIVERED AS A TURNKEY SYSTEM TO PROJECT SITE. ALL PIPING AND FITTINGS SHALL BE SCHEDULE 40 PVC.
2. THE FILTRATION MANIFOLD SHALL BE INSTALLED IN A LOCATION WHERE IT IS PROTECTED FROM THE ELEMENTS, FREEZING CONDITIONS, AND VANDALISM. CONTACT FACTORY FOR OPTIONAL FREESTANDING ENCLOSURES. THE MANIFOLD MAY BE INSTALLED INDOORS, IN A MECHANICAL ROOM OR OTHER LOCATION, WITH A FLOOR DRAIN SO AS TO DRAIN AWAY ANY INCIDENTAL WATER PRODUCED DURING THE INSTALLATION, OPERATION AND MAINTENANCE OF THE MANIFOLD.
3. THE MANIFOLD IS FREESTANDING WITH STEEL SUPPORT FRAME. THE FRAME SHALL BE ATTACHED TO A WALL TO PREVENT MOVEMENT. THE PRESSURE TANK IS MOUNTED TO THE FRAME BUT SHOULD ALSO BE FULLY SUPPORTED BY THE GROUND UNDERNEATH.
4. PUMP IN STORAGE TANK MUST BE LOCATED NOT LOWER THAN 15' VERTICAL FEET FROM BOTTOM OF FILTRATION MANIFOLD TO PROVIDE RATED PRESSURE AND SUPPLY. CONSULT FACTORY FOR DISTANCES GREATER THAN 15'.
5. ALL WORK ASSOCIATED WITH GREYWATER SYSTEM SHALL CONFORM TO ALL COUNTY, STATE AND LOCAL PLUMBING & ELECTRICAL CODES.

MANIFOLD NOTES	
①	MAKEUP WATER TO STORAGE TANK (VIA AIR-GAP), 1.25"Ø PVC SCH.40
②	MAKEUP WATER IN FROM DOMESTIC SUPPLY, 1.25"Ø PVC SCH.40
③	FILTER BACKFLUSH WATER, 1.25"Ø, PVC SCH.40. DIRECT CONNECT TO SEWER DRAIN 3"Ø MIN.
④	GREYWATER IN FROM PUMP, 1.25" PVC SCH.40
⑤	IRRIGATION SUPPLY OUT, 1.25" PVC SCH.40
⑥	MAKEUP WATER METER
⑦	MAKEUP VALVE
⑧	IRRIGATION WATER METER
⑨	SEDIMENT FILTER, 100 MICRON
⑩	FILTER BACKWASH VALVE
⑪	PRESSURE TANK 35-GALLON
⑫	ELECTRICAL SERVICE CONNECTION
⑬	SYSTEM CONTROL PANEL
⑭	MANIFOLD SUPPORT FRAME, ATTACH TO WALL
AIR-GAP NOTES	
⑮	MAKEUP WATER FROM MANIFOLD, 1.25"Ø, SCH.80 PVC ABOVE GROUND
⑯	AIR-GAP, 2.5" MINIMUM CLEARANCE
⑰	3"Ø SCH.80 STAND PIPE WITH 3" COUPLING SCH.80 PVC
⑱	P-TRAP 3"Ø, SCH.40 PVC OR ABS
⑲	DRAIN TO STORAGE TANK, 3"Ø, SLOPE 1% MIN. SCH.40 PVC OR ABS



Smart Greywater System
GW-250U-15

DRAWING NAME: GREYWATER MANIFOLD & AIR GAP	
DATE: 1/27/2016	DRAWN: JM
SCALE: NO SCALE	SHEET: 3 of 4
UNLESS NOTED DIMENSIONS ARE IN INCHES WITH TOLERANCES ±0.02 IN/IN DO NOT SCALE	
WATERLAB IS THE PRODUCTS DIVISION OF WATERSPROUT INC. THE INFORMATION CONTAINED IN THIS DRAWING IS THE SOLE PROPERTY OF WATERSPROUT INC. ANY REPRODUCTION IN PART OR AS A WHOLE WITHOUT THE WRITTEN PERMISSION OF WATERSPROUT INC IS PROHIBITED. DESIGN AND INVENTIONS RIGHTS ARE RESERVED. IN THE INTEREST OF TECHNOLOGICAL ADVANCEMENT, ALL PRODUCTS ARE SUBJECT TO DESIGN AND/OR MATERIAL CHANGE WITHOUT NOTICE WATERSPROUT INC. 2016	

SPECIFICATIONS FOR WATERLAB GW-250U-15 SMART GREYWATER SYSTEM

1. GENERAL

THE CONTRACTOR SHALL FURNISH AND INSTALL A WATERLAB GW-250U-15 GREYWATER SYSTEM PACKAGE AS MANUFACTURED BY WATERSPROUT INC. THE GREYWATER SYSTEM PACKAGE SHALL BE COMPLETE WITH ALL NEEDED EQUIPMENT AS SHOWN ON THE DRAWINGS AND SPECIFIED HEREIN. THE PRINCIPAL ITEMS OF EQUIPMENT SUPPLIED BY WATERSPROUT INC SHALL INCLUDE: (1) ONE STORAGE TANK WITH VOLUME OF 250 GALLONS (946L). (2) ALL PUMPS, CONTROLS, VALVES, FILTERS, AND FITTINGS INTERIOR TO THE TANKS AS SHOWN ON THE DRAWINGS. (3) THE FILTRATION MANIFOLD SHALL BE PROVIDED BY WATERSPROUT INC AS A MANUFACTURED TURNKEY SYSTEM. (4) MAKEUP WATER AIR-GAP PIPING AND FITTINGS. (5) BACKWATER VALVE WITH EXTENSION KIT AND VALVE BOX (6) DIVERTER VALVE WITH ACTUATOR. ALL OTHER ITEMS SHALL BE PROVIDED BY INSTALLING CONTRACTOR.

2. DESIGN CONDITIONS

THE GW-250U-15 GREYWATER SYSTEM SHALL BE CAPABLE OF SUPPLYING UP TO 250 GPD OF FILTERED GREYWATER TO THE IRRIGATION SYSTEM, WITH ADDITIONAL WATER SUPPLIED BY MAKEUP WATER ADDED TO THE STORAGE TANK THROUGH AN AIR-GAP BACKFLOW PREVENTER. GREYWATER COLLECTED FROM THE BUILDING SHALL INCLUDE SHOWER, SINK AND LAUNDRY WATER. THE SYSTEM IS SIZED TO COLLECT FROM RESIDENTIAL (UP TO 8 OCCUPANTS) AND LIGHT COMMERCIAL BUILDINGS. TOILETS AND KITCHEN SINK WASTE ARE CLASSIFIED AS BLACKWATER AND CANNOT BE PROCESSED BY THE GREYWATER SYSTEM. THE FILTRATION MANIFOLD SHALL FILTER GREYWATER TO A 100 MICRON SIZE AND SUPPLY GREYWATER TO THE LANDSCAPE IRRIGATION SYSTEM WITH A MINIMUM PRESSURE OF 45 PSI AT A MAXIMUM FLOW RATE OF 15 GPM. THE GW-250U-15 IS CLASSIFIED AS AN 'UNTREATED' SYSTEM PER CALIFORNIA PLUMBING CODE AND MUST BE APPLIED THROUGH SUB-SURFACE IRRIGATION METHODS ONLY (DRIP, BUBBLERS, ETC.). CONSULT LOCAL CODES & REGULATIONS.

3. COLLECTION & DIVERSION

GREYWATER FROM THE BUILDING SHALL DRAIN TO THE UNDERGROUND DIVERTER VALVE BASIN THROUGH A 3" DIAMETER PIPE. THE DIVERTER VALVE DIRECTS THE GREYWATER TO THE STORAGE TANK OR THROUGH THE BYPASS PIPE TO SANITARY SEWER (OR SEPTIC TANK). THE DIVERTER VALVE IS FITTED WITH AN ACTUATOR THAT ALLOWS REMOTE OPERATION OF THE VALVE BY AN ELECTRICAL SWITCH LOCATED AT THE CONTROL PANEL.

4. STORAGE TANK

GREYWATER ENTERING THE STORAGE TANK SHALL FLOW THROUGH THE BAG FILTER ASSEMBLY. THE BAG FILTER REMOVES PARTICLES LARGER THAN 1200 MICRON SIZE ($\frac{1}{2}$ "). THE BAG FILTER ASSEMBLY CAN BE REMOVED FROM THE TANK USING A SLIDING DISCONNECT WHICH ALLOWS FOR CHANGING OF THE BAG FILTER WITHOUT ENTRY INTO THE TANK. THE TANK VOLUME SHALL NOT BE LESS THAN 250 GALLONS. THE STORAGE TANK SHALL HAVE A GRAVITY OVERFLOW DRAIN CONNECTED TO THE SEWER. THE OVERFLOW AND BYPASS PIPE SHALL HAVE A BACKWATER VALVE TO PREVENT SEWER BACKFLOW INTO THE TANK. THE BACKWATER VALVE AND DIVERTER VALVE SHALL REMAIN ACCESSIBLE FOR MAINTENANCE.

5. WATER LEVEL MONITORING & PRESSURIZATION

WATER LEVEL IN THE STORAGE TANK SHALL BE MONITORED BY A LOW LEVEL FLOAT SWITCH PROVIDING CONTINUOUS LEVEL INFORMATION TO THE CONTROL PANEL LOCATED ON THE FILTRATION MANIFOLD. A SINGLE SUBMERSIBLE IRRIGATION PUMP LOCATED IN THE STORAGE TANK SHALL PROVIDE PRESSURIZED GREYWATER TO THE FILTRATION MANIFOLD.

6. MAKEUP WATER

7. MAKEUP WATER SHALL BE ADDED TO THE STORAGE TANK DURING LOW WATER LEVEL CONDITIONS THROUGH AN AIR-GAP BACKFLOW PREVENTER. MAKEUP WATER ADDED TO AIR-GAP BACKFLOW PREVENTER SHALL DRAIN TO THE STORAGE TANK THROUGH 3" DIAMETER DRAIN PIPE SLOPED 1% MIN. THE TOP OF HTE AIR GAP PIPE MUST BE AT LEAST 6" ABOVE THE TOP OF THE TANK.

8. FILTRATION MANIFOLD

GREYWATER FROM STORAGE TANK SHALL BE PUMP TO THE FILTRATION MANIFOLD AND SHALL BE MECHANICALLY FILTERED TO 100 MICRON PRIOR TO DISTRIBUTION TO THE IRRIGATION SYSTEM. THE FILTRATION MANIFOLD SHALL BE PRE-PLUMBED, WIRED, AND TESTED PRIOR TO SHIPMENT. ALL PIPING AND FITTINGS SHALL BE SCHEDULE 40 PVC. STORAGE TANK PUMP MUST BE LOCATED NOT LOWER THAN 15' VERTICAL FEET FROM BOTTOM OF FILTRATION MANIFOLD TO PROVIDE RATED PRESSURE AND FLOW. CONSULT FACTORY FOR DISTANCES GREATER THAN 15'. A CONTROL PANEL SHALL BE INCLUDED WITH THE FILTRATION MANIFOLD TO MONITOR AND CONTROL SYSTEM OPERATIONAL PARAMETERS. THE CONTROL SYSTEM SHALL CONTROL TANK LEVEL AND EQUIPMENT OPERATION PER CUSTOM SOFTWARE AND SHALL PROVIDE ALARMS TO MAINTENANCE PROFESSIONALS. AN IRRIGATION FLOW METER AND MAKEUP FLOW METER SHALL BE INCLUDED WITH THE FILTRATION MANIFOLD AND CONNECTED TO CONTROL PANEL TO METER WATER USAGE. A PRESSURE TRANSMITTER SHALL BE INSTALLED ON THE FILTRATION MANIFOLD AND CONNECTED TO CONTROL PANEL TO MONITOR SYSTEM PRESSURE. A 35-GALLON BLADDER TANK INCLUDED WITH THE FILTRATION MANIFOLD SHALL MINIMIZE PUMP CYCLING.

9. ELECTRICAL


CONTRACTOR SHALL SUPPLY AND CONNECT (1) DEDICATED 120VAC CIRCUIT WITH 15 AMP CAPACITY TO FILTRATION MANIFOLD. ALL CONDUIT AND WIRING TO BE SUPPLIED BY CONTRACTOR. ELECTRICAL LINE VOLTAGE FROM FILTRATION MANIFOLD TO PUMP IN STORAGE TANK SHALL BE RATED TO SUPPLY PUMP LOAD: 120VAC AT 10.6 AMP, $\frac{1}{2}$ HP. ELECTRICAL LOW VOLTAGE FROM FILTRATION MANIFOLD TO FLOAT SWITCH IN STORAGE TANK SHALL BE RATED TO SUPPLY LOAD THROUGH SHIELDED CABLE: 24VDC 20mA. ALL WIRING MUST CONFORM TO APPLICABLE CODES.

10. INSTALLATION

INSTALLATION AND CONNECTIONS TO GREYWATER SYSTEM SHALL BE DONE IN ACCORDANCE WITH THE WRITTEN INSTALLATION MANUAL PROVIDED WITH EQUIPMENT BY MANUFACTURER AND IN ACCORDANCE WITH ALL APPLICABLE LOCAL CODES AND REGULATIONS. MANUFACTURER SHALL SUPPLY OPERATIONS & MAINTENANCE MANUAL TO SYSTEM OPERATOR

11. WARRANTY

MANUFACTURER SHALL PROVIDE A WARRANTY ON THE GREYWATER SYSTEM FOR A PERIOD OF ONE YEAR FROM THE COMMISSION DATE OR AFTER SYSTEM DELIVERY, WHICHEVER COMES FIRST, SUBJECT TO THE FOLLOWING CONDITIONS: 1. DURING THE WARRANTY PERIOD, IF ANY PART IS DEFECTIVE OR FAILS TO PERFORM AS SPECIFIED WHEN OPERATING AT DESIGN CONDITIONS, AND IF THE EQUIPMENT HAS BEEN INSTALLED AND IS BEING OPERATED AND MAINTAINED IN ACCORDANCE WITH THE WRITTEN INSTRUCTIONS PROVIDED BY WATERSPROUT INC, WATERSPROUT INC. WILL REPAIR OR REPLACE AT ITS DISCRETION SUCH DEFECTIVE PARTS FREE OF CHARGE. DEFECTIVE PARTS MUST BE RETURNED BY OWNER TO WATERSPROUT INC. FACTORY POSTAGE PAID, IF SO REQUESTED. THE COST OF LABOR AND ALL OTHER EXPENSES RESULTING FROM REPLACEMENT OF THE DEFECTIVE PARTS AND FROM INSTALLATION OF PARTS FURNISHED UNDER THIS WARRANTY AND REGULAR MAINTENANCE ITEMS SUCH AS FILTERS SHALL BE BORNE BY THE OWNER. 2. THIS WARRANTY DOES NOT COVER GENERAL SYSTEM MISUSE OR ANY COMPONENTS THAT HAVE BEEN DISASSEMBLED BY UNAUTHORIZED PERSONS, IMPROPERLY INSTALLED OR DAMAGED DUE TO ALTERED OR IMPROPER WIRING OR OVERLOAD PROTECTION. 3. THIS WARRANTY APPLIES ONLY TO THE GREYWATER SYSTEM AND DOES NOT INCLUDE ANY OF THE STRUCTURE WIRING, PLUMBING, DRAINAGE, TANK OR DISPOSAL. 4. WATERSPROUT INC. RESERVES THE RIGHT TO REVISE, CHANGE OR MODIFY THE CONSTRUCTION AND/OR DESIGN OF THE GREYWATER SYSTEM, OR ANY COMPONENT PART OR PARTS THEREOF, WITHOUT INCURRING ANY OBLIGATION TO MAKE SUCH CHANGES OR MODIFICATIONS IN PRESENT EQUIPMENT. 5. WATERSPROUT INC. IS NOT RESPONSIBLE FOR CONSEQUENTIAL OR INCIDENTAL DAMAGES OF ANY NATURE RESULTING FROM SUCH THINGS AS, BUT NOT LIMITED TO, DEFECT IN DESIGN, MATERIAL, OR WORKMANSHIP, OR DELAYS IN DELIVERY, REPLACEMENTS OR REPAIRS. THIS WARRANTY IS IN LIEU OF ALL OTHER WARRANTIES EXPRESS OR IMPLIED. WATERSPROUT INC. SPECIFICALLY DISCLAIMS ANY IMPLIED WARRANTY OF MERCHANTABILITY OR FITNESS FOR A PARTICULAR PURPOSE. NO REPRESENTATIVE OR PERSON IS AUTHORIZED TO GIVE ANY OTHER WARRANTY OR TO ASSUME FOR WATERSPROUT INC.



Smart Greywater System

GW-250U-15

DRAWING NAME:	
SPECIFICATIONS	
DATE: 1/27/2016	DRAWN: JM
SCALE: NO SCALE	SHEET: 4 of 4
UNLESS NOTED DIMENSIONS ARE IN INCHES WITH TOLERANCES ±0.02 IN/IN DO NOT SCALE	
WATERLAB IS THE PRODUCTS DIVISION OF WATERSPROUT INC. THE INFORMATION CONTAINED IN THIS DRAWING IS THE SOLE PROPERTY OF WATERSPROUT INC. ANY REPRODUCTION IN PART OR AS A WHOLE WITHOUT THE WRITTEN PERMISSION OF WATERSPROUT INC IS PROHIBITED. DESIGN AND INVENTIONS RIGHTS ARE RESERVED. IN THE INTEREST OF TECHNOLOGICAL ADVANCEMENT, ALL PRODUCTS ARE SUBJECT TO DESIGN AND/OR MATERIAL CHANGE WITHOUT NOTICE WATERSPROUT INC. 2016	