

WATER-USE MONITORING

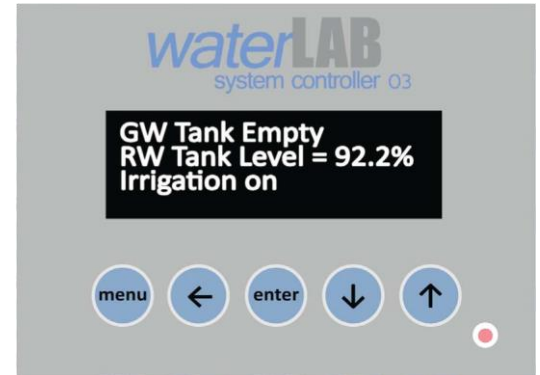
What is Water-use monitoring?

Water-use monitoring provides feedback data about how your greywater/rainwater system is performing. We offer either our Smart or Advanced Packages which work in conjunction with our Water Systems Controller included with every Smart Greywater/Rainwater System.

Smart Monitoring Package

Our Smart Monitoring Package adds a digital water meter that is connected to the Water System Controller. Water-use information is displayed on the LCD screen of the Controller. The controller displays the following information:

- Total gallons your greywater/rainwater system has saved since installed.
- Total gallons of backup water used since the system was installed.
- Current flow rate (gallon per minute) of the system when running.

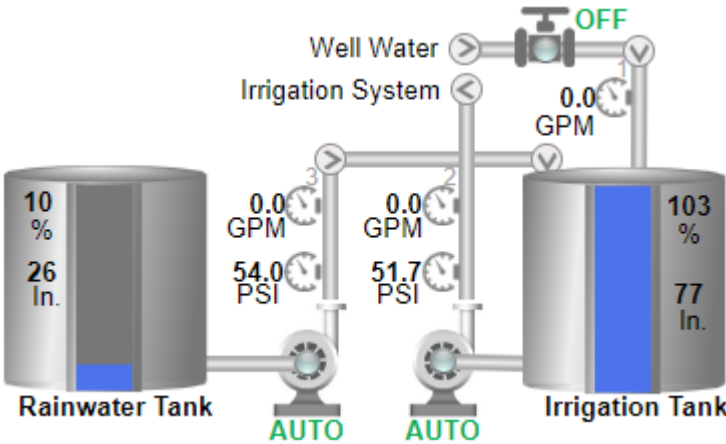


Smart water-use data is displayed on the LCD screen of local controller

Advanced Monitoring Package

In addition to the Smart Monitoring, our Advanced Monitoring Package adds an analog tank level sensor and an internet enabled datalogger to the system. The data logger uploads system data to an online dashboard where water-use information can be viewed by any internet enabled device.

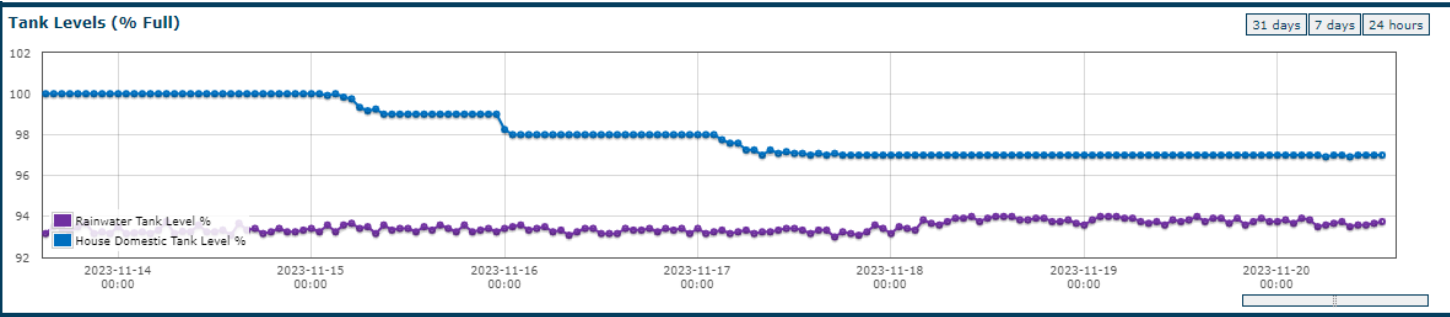
- A system graphic provides a real-time snapshot of current values
- Historic water usage is displayed for previous and current day, week, month and year. Data can be downloaded as an excel file for further analysis
- Tank levels & water usage is displayed in historical graphs
- Alarms are programmed into the dashboard so that when the water usage is outside of the normal range (constant leak, pipe break, etc), email and/or texts alert users



System Graphic provides a real-time snapshot

3 RAINWATER METER			
	CURRENT	LAST	
Hour	0	0	Gall.
Day	0	0	Gall.
Week	0	283	Gall.
Month	1730	6820	Gall.
Year	8500	0	Gall.

Historic water usage is displayed



Tank Levels & water usage are displayed in graphs